

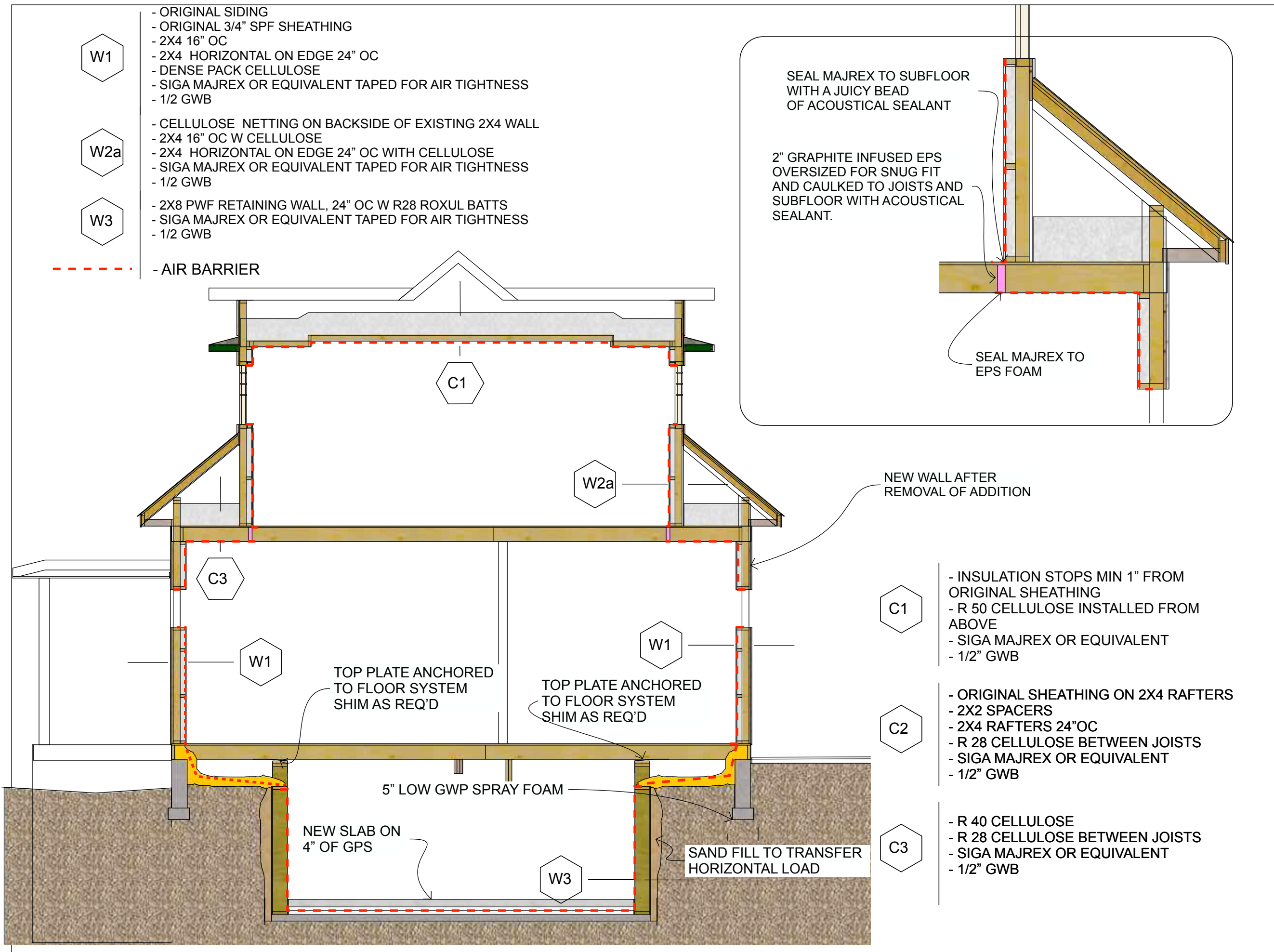
RUTHERFORD
COTTAGE
RESTORATION
AND ADDITION

DATE
February 29, 2024

COTTAGE SECTIONS

DRAWN BY
PA

EAST WEST
SECTION



W1

- ORIGINAL SIDING
- ORIGINAL 3/4" SPF SHEATHING
- 2X4 16" OC
- 2X4 HORIZONTAL ON EDGE 24" OC
- DENSE PACK CELLULOSE
- SIGA MAJREX OR EQUIVALENT TAPED FOR AIR TIGHTNESS
- 1/2" GWB

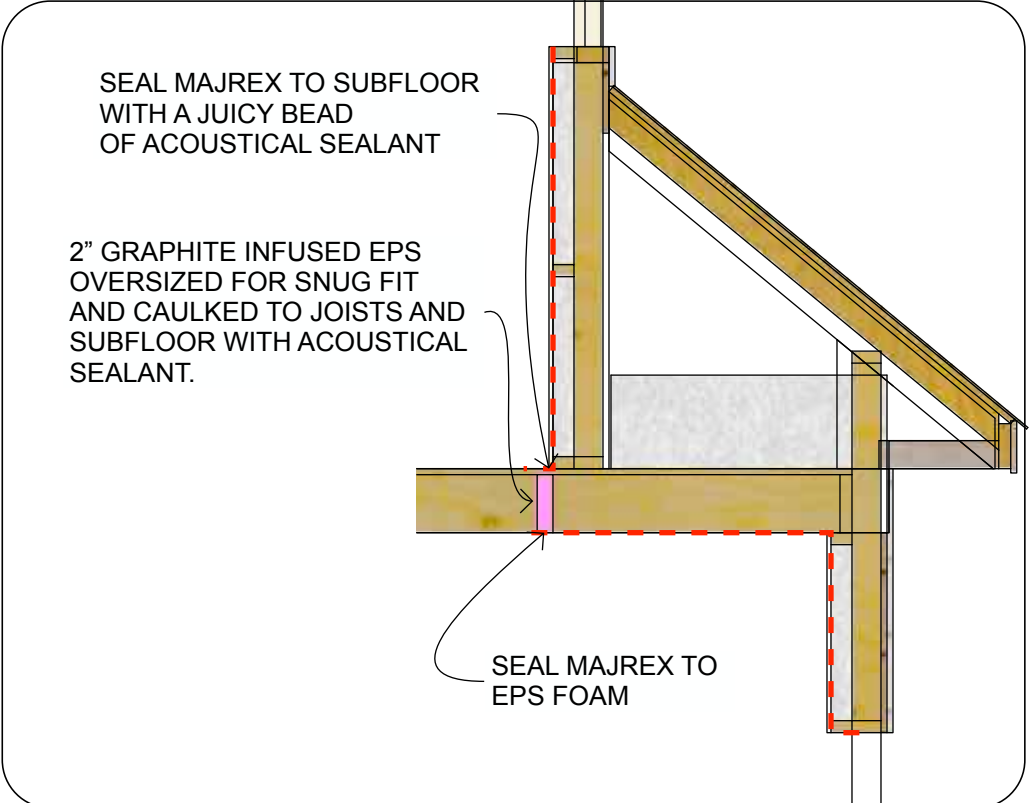
W2a

- CELLULOSE NETTING ON BACKSIDE OF EXISTING 2X4 WALL
- 2X4 16" OC W CELLULOSE
- 2X4 HORIZONTAL ON EDGE 24" OC WITH CELLULOSE
- SIGA MAJREX OR EQUIVALENT TAPED FOR AIR TIGHTNESS
- 1/2" GWB

W3

- 2X8 PWF RETAINING WALL, 24" OC W R28 ROXUL BATTS
- SIGA MAJREX OR EQUIVALENT TAPED FOR AIR TIGHTNESS
- 1/2" GWB

- AIR BARRIER



SEAL MAJREX TO SUBFLOOR WITH A JUICY BEAD OF ACOUSTICAL SEALANT

2" GRAPHITE INFUSED EPS OVERSIZED FOR SNUG FIT AND CAULKED TO JOISTS AND SUBFLOOR WITH ACOUSTICAL SEALANT.

SEAL MAJREX TO EPS FOAM

NEW WALL AFTER REMOVAL OF ADDITION

C1

- INSULATION STOPS MIN 1" FROM ORIGINAL SHEATHING
- R 50 CELLULOSE INSTALLED FROM ABOVE
- SIGA MAJREX OR EQUIVALENT
- 1/2" GWB

C2

- ORIGINAL SHEATHING ON 2X4 RAFTERS
- 2X2 SPACERS
- 2X4 RAFTERS 24" OC
- R 28 CELLULOSE BETWEEN JOISTS
- SIGA MAJREX OR EQUIVALENT
- 1/2" GWB

C3

- R 40 CELLULOSE
- R 28 CELLULOSE BETWEEN JOISTS
- SIGA MAJREX OR EQUIVALENT
- 1/2" GWB

TOP PLATE ANCHORED TO FLOOR SYSTEM SHIM AS REQ'D

TOP PLATE ANCHORED TO FLOOR SYSTEM SHIM AS REQ'D

5" LOW GWP SPRAY FOAM

NEW SLAB ON 4" OF GPS

SAND FILL TO TRANSFER HORIZONTAL LOAD

W1

- ORIGINAL SIDING
- ORIGINAL 3/4" SPF SHEATHING
- 2X4 16" OC
- 2X3 HORIZONTAL ON EDGE 24" OC
- DENSE PACK CELLULOSE
- SIGA MAJREX OR EQUIVALENT TAPED FOR AIR TIGHTNESS
- 1/2" GWB

W2b

- CELLULOSE NETTING ON BACKSIDE OF 2x4 HORIZONTAL STRAPPING
- 2X4 16" OC W CELLULOSE
- CAVITY FILLED WITH DENSE CELLULOSE
- SIGA MAJREX OR EQUIVALENT TAPED FOR AIR TIGHTNESS
- 1/2" GWB

W3

- 2X8 PWF RETAINING WALL, 24" OC W R28 ROXUL BATTS
- SIGA MAJREX OR EQUIVALENT TAPED FOR AIR TIGHTNESS
- 1/2" GWB

- AIR BARRIER

C1

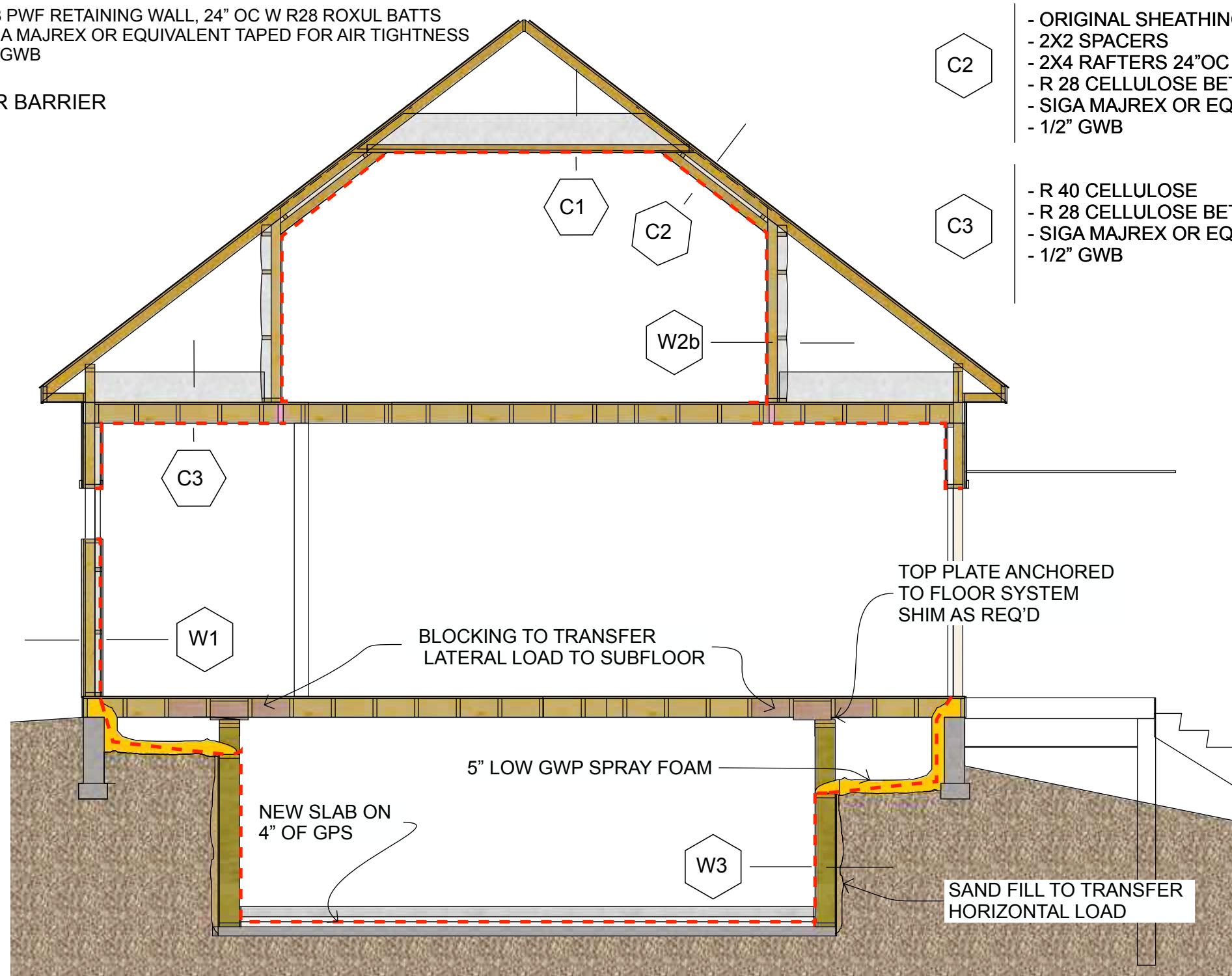
- INSULATION STOPS MIN 1" FROM ORIGINAL SHEATHING
- R 50 CELLULOSE INSTALLED FROM ABOVE
- SIGA MAJREX OR EQUIVALENT
- 1/2" GWB

C2

- ORIGINAL SHEATHING ON 2X4 RAFTERS
- 2X2 SPACERS
- 2X4 RAFTERS 24"OC
- R 28 CELLULOSE BETWEEN JOISTS
- SIGA MAJREX OR EQUIVALENT
- 1/2" GWB

C3

- R 40 CELLULOSE
- R 28 CELLULOSE BETWEEN JOISTS
- SIGA MAJREX OR EQUIVALENT
- 1/2" GWB



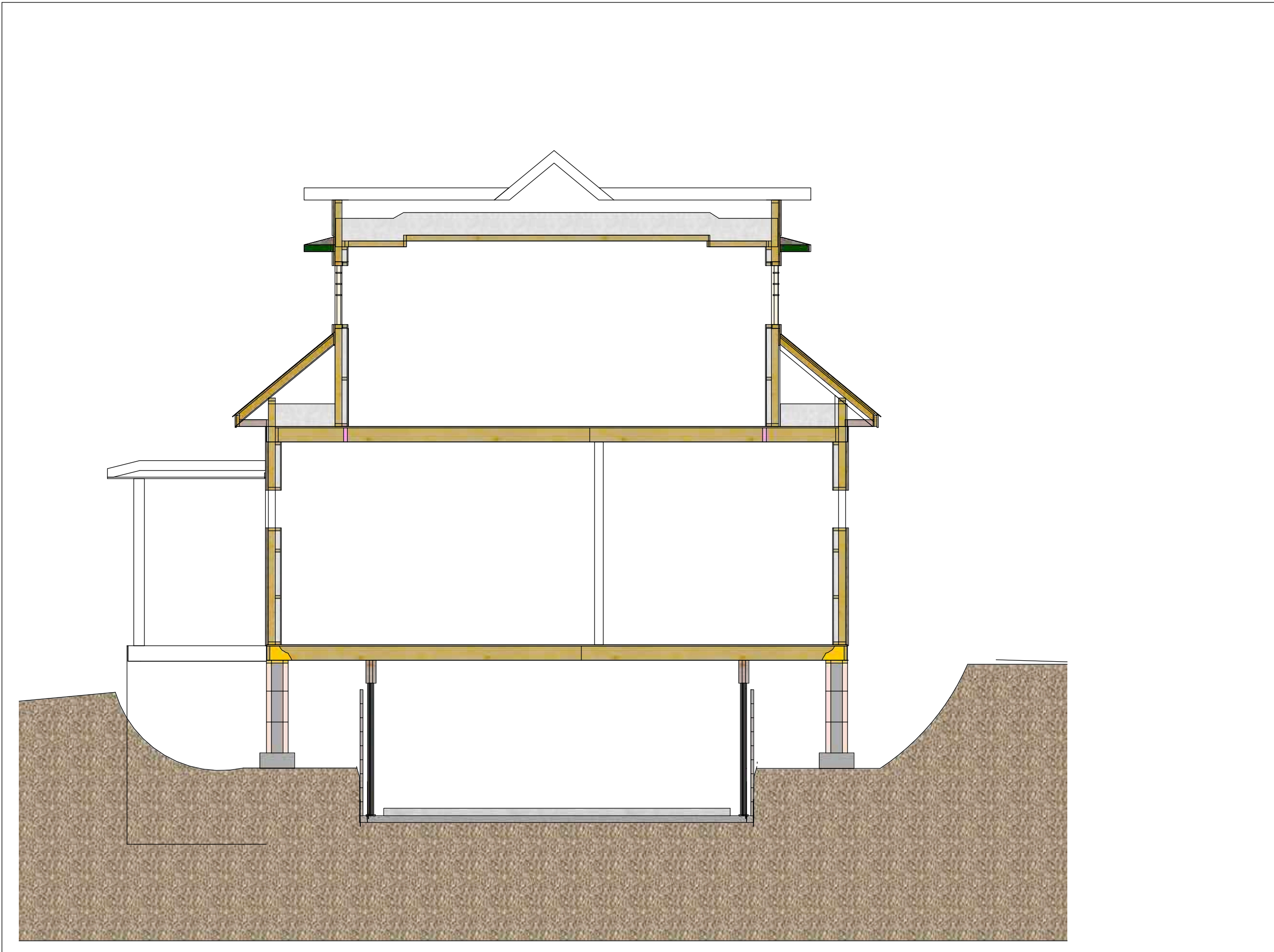
RUTHERFORD
COTTAGE
RESTORATION
AND ADDITION

DATE
February 29, 2024

COTTAGE SECTIONS

DRAWN BY
PA

NORTH SOUTH
SECTION



RUTHERFORD
COTTAGE
RESTORATION
AND ADDITION

DATE
February 29, 2024

COTTAGE SECTIONS

DRAWN BY
PA

ALTERNATE
FOUNDATION N/
SECTION



RUTHERFORD
COTTAGE
RESTORATION
AND ADDITION

DATE
February 29, 2024

COTTAGE SECTIONS

DRAWN BY
PA

PHOTOS OF
EXISTING
